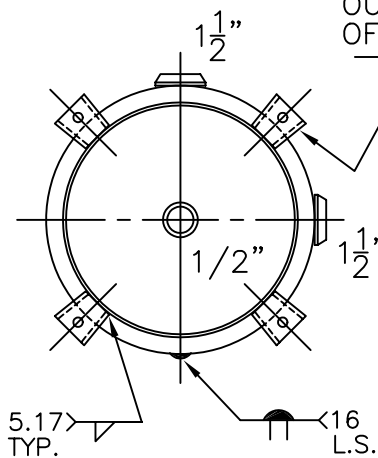


3/16" THK. CLIPS PER
MA-395-B (4) PLC'S
W 9/16" Ø HOLE ON
17 1/8" B.C.; WELD
OUTSIDE VERT. EDGE
OF CLIP ONLY



NOTE: 1) HYDRO @ 326 PSIG. MIN.

| SHELL / HEADS | |
|-------------------|-----------------------|
| .135" SA-414-G | 2:1 S.E. |
| JOGGLE | |
| .135" SA-414-G | |
| M.A.W.P. | 250 PSIG. @ 400 °F |
| M.D.M.T. | -20 °F @ 250 PSIG. |
| ASME SECTION VIII | DIV. 1, 2004 ADD 2005 |
| X-RAY: | RT-NO |
| GALLONS: | 30 |
| WT. | 91 LBS. |
| SERIAL NO. | |
| N.B. | |

| | |
|-------------------------------|----------------|
| 16-VC-30-R | REV. 6-12-06 |
| FOR: HANSON STANDARD | DATE: 10-13-86 |
| VERT. AIR TANK | |
| INSIDE: UNPAINTED | |
| OUTSIDE: PRIME | |
| BY: J.G. | SCALE: 1"=12" |
| ROY E. HANSON JR. MFG. | |
| 1600 E. WASHINGTON BLVD. | |
| LOS ANGELES, CA 90021 | |