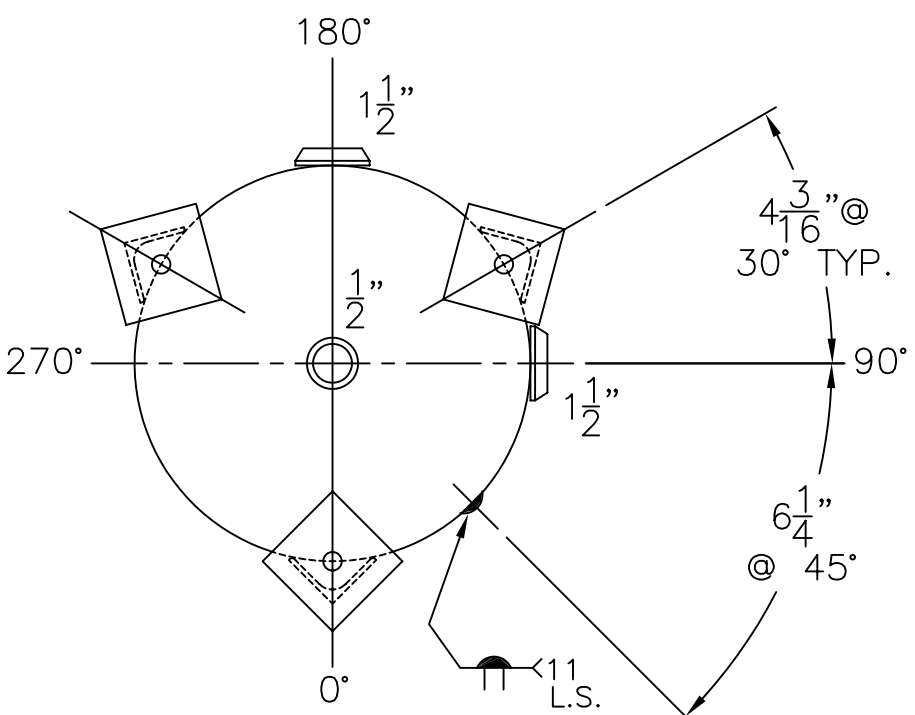


(3) 2 1/2"x 2 1/2"x 3/16"THK.  
13 7/16"LG. ANGLE LEGS

(3) 4"x 4"x 1/4"THK.  
PAD W/ 3/4"Ø HOLE  
FOR 1/2"Ø x 8"LG. BOLTS  
GRADE 5 OR BETTER  
6" EMBEDMENT



NOTE: 1) HYDRO @ 390 PSIG. MIN.

SHELL / HEADS		.136" SA-414-G 2:1 S.E.	
JOGGLE - .159 OFFSET			
.164" SA-414-G			
M.A.W.P.	300 PSIG. @ 400 °F		
M.D.M.T.	-20 °F @ 300 PSIG.		
ASME. SECTION VIII	DIV. 1, 2010 ADD 2010		
X-RAY:	RT-NO		
GALLONS:	30	WT.	115 LBS.
SERIAL NO.			
N.B.			
16-VD-30-L		REV.	3-3-11
FOR: HANSON STANDARD		DATE:	6-21-99
VERT. AIR TANK			
SURFACE AREA = 14.7 SQ. FT.			
INSIDE: UNPAINTED			
OUTSIDE: PRIME			
CAD-"B" SIZE UNDER "STD. SERIES			
BY: J.G.	SCALE: 1/8"=1"		
<b>ROY E. HANSON JR. MFG.</b>			
1600 E. WASHINGTON BLVD.			
LOS ANGELES, CA 90021			