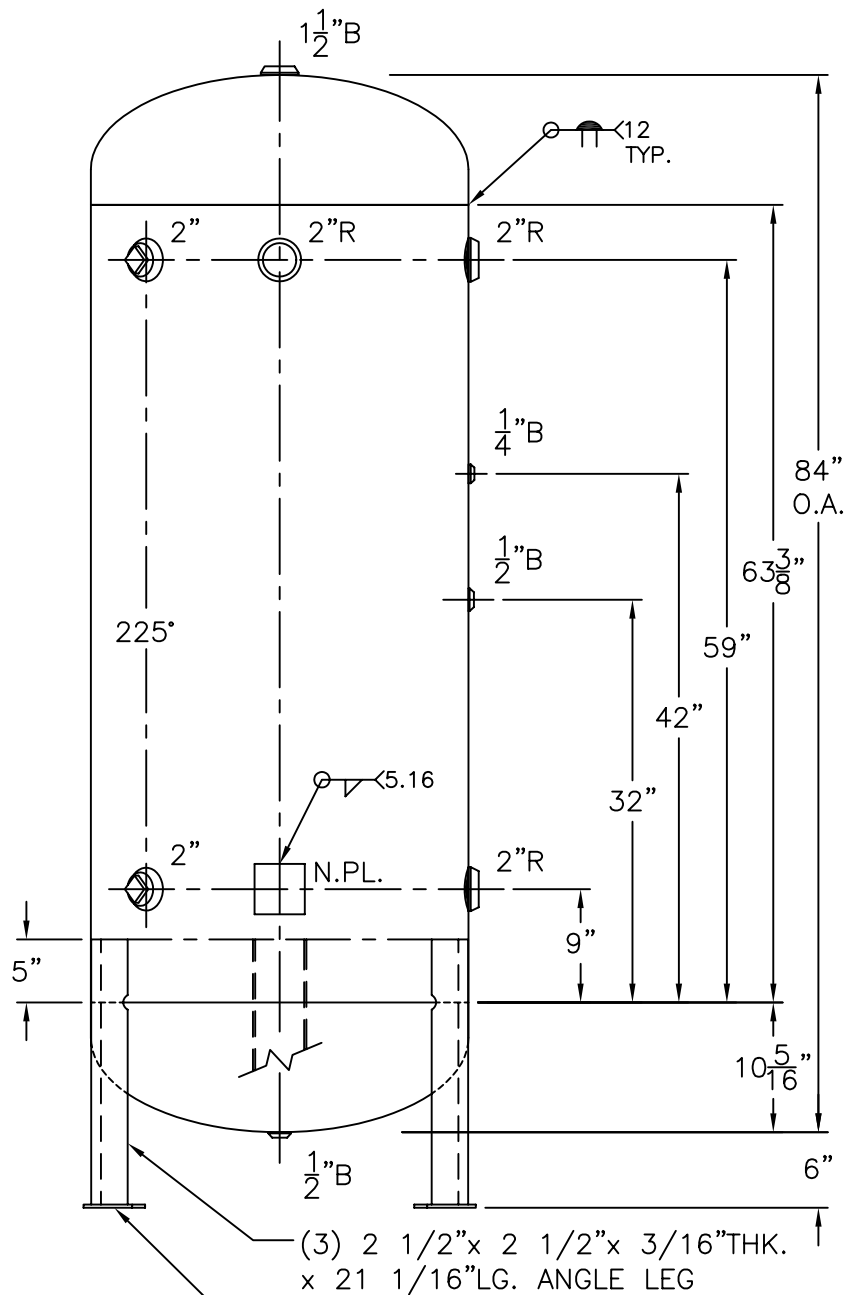


2"R W/ C.I. PLUG
INSP. OPENING
(2) PLC'S.

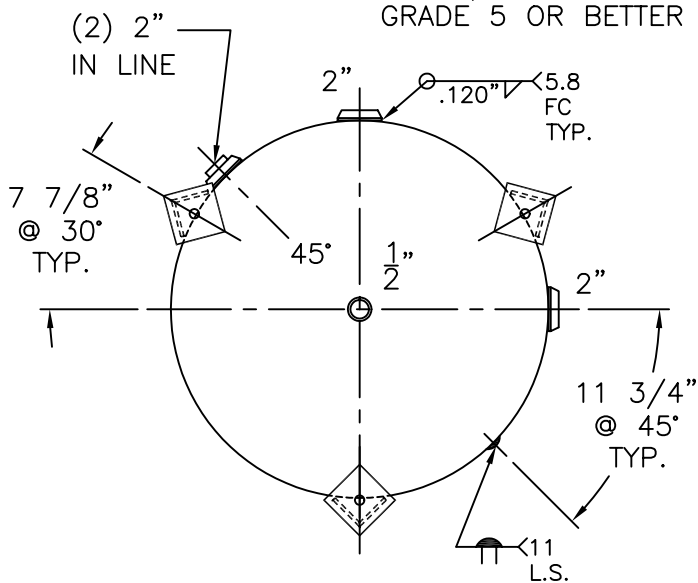


(3) 2 1/2" x 2 1/2" x 3/16" THK.
x 21 1/16" LG. ANGLE LEG

(3) 4" x 4" x 1/4" THK.
PAD W/ 3/4" Ø HOLE
FOR 1/2" Ø x 6" LG. BOLTS
GRADE 5 OR BETTER

NOTE: 1) HYDRO @ 327 PSIG. MIN.

SHELL / HEADS	
.218" SA-455	2:1 S.E.
JOGGLE (.205" MIN.)	
.209 OFFSET	
.218" SA-455	(.206" MIN.)
M.A.W.P.	250 PSIG. @ 400 °F
M.D.M.T.	-20 °F @ 250 PSIG.
ASME SECTION VIII	DIV. 1, 2004 ADD 2006
X-RAY: RT-4 SPOT L.S. ONLY	
GALLONS: 240	WT. 576 LBS.
SERIAL NO.	
N.B.	



(2) 2" IN LINE

11 3/4" @ 45° TYP.

30-VC-240-1	REV. 8-28-07
FOR: HANSON STANDARD	DATE: 7-8-85
VERT. AIR TANK	
INSIDE: UNPAINTED	
OUTSIDE: PRIME	
LEG-ZONE 4-15 KM.	
BY: J.G.	SCALE: 3/4"=12"
ROY F. HANSON JR. MFG.	
1600 E. WASHINGTON BLVD.	
LOS ANGELES, CA 90021	