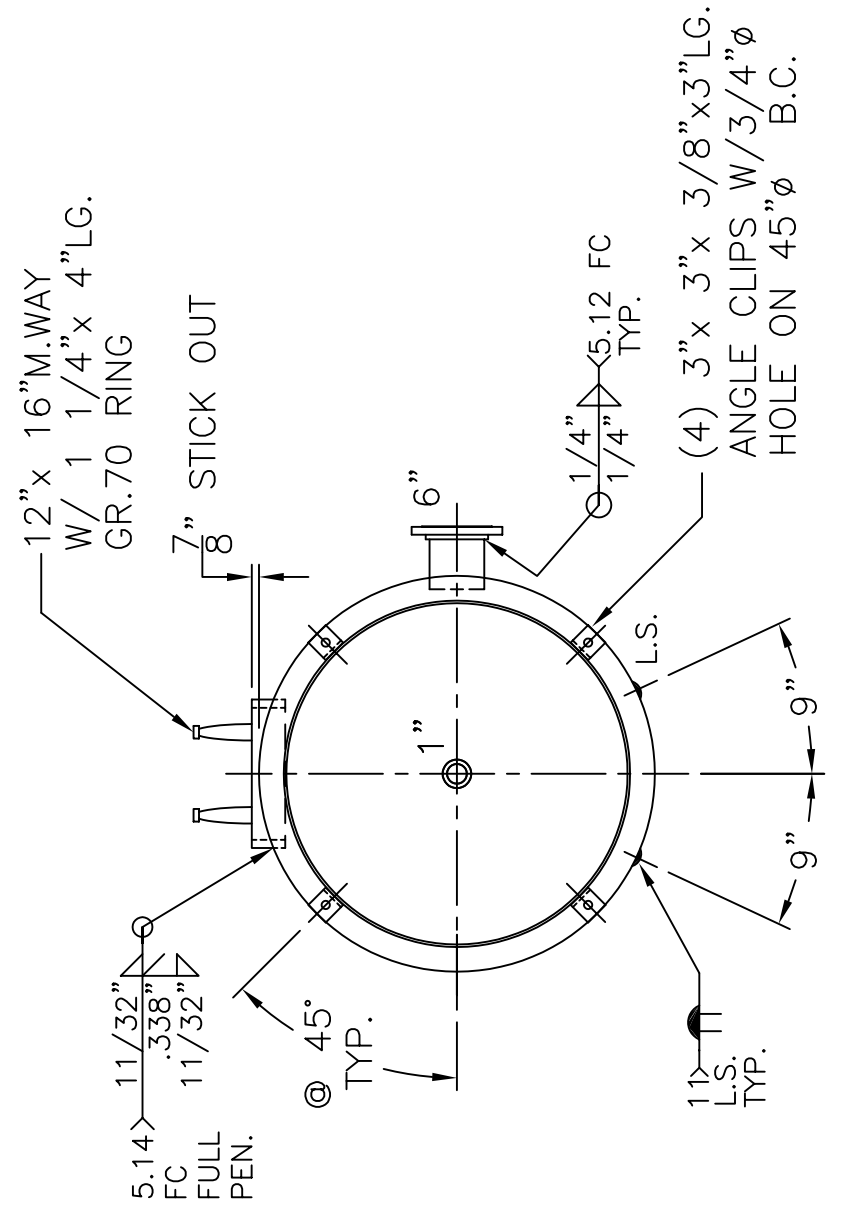


6"-300# R.F.S.O.
 FLG. W/ SCH. 120
 PIPE x 7 5/8" LG.
 (2) PLC'S.



NOTE: 1) HYDRO @ 393 PSIG. MIN.

SHELL / HEADS	.358" MIN. SA-516-70 2:1 S.E.	48-VD-1060-R	REV. 6-19-08
			DATE: 12-2-98
		FOR: HANSON STANDARD	
		VERT. AIR TANK	
	.338" SA-455	INSIDE: UNPAINTED	
M.A.W.P.	300 PSIG. @ 400 °F	OUTSIDE: PRIME	
M.D.M.T.	-20 °F @ 300 PSIG.	CAD-"B" UNDER "STD"-SERIES	
ASME. SECTION VIII DIV. 1, 2007 ADD 2007		BY: J.G. SCALE: 1/2" = 12"	
X-RAY: RT-2 100% L.S. & SPOT ALL G.S.		ROY E. HANSON JR. MFG.	
GALLONS:	1060 WT. 2823 LBS.		
SERIAL NO.		1600 E. WASHINGTON BLVD. LOS ANGELES, CA 90021	
N.B.			