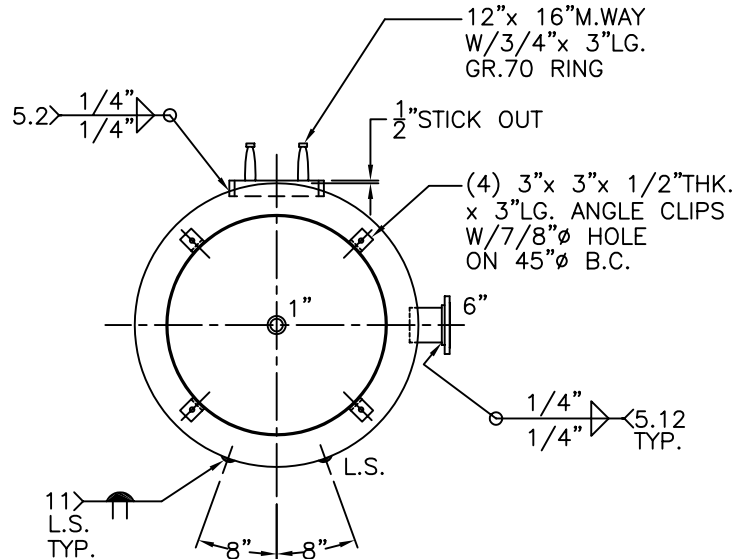
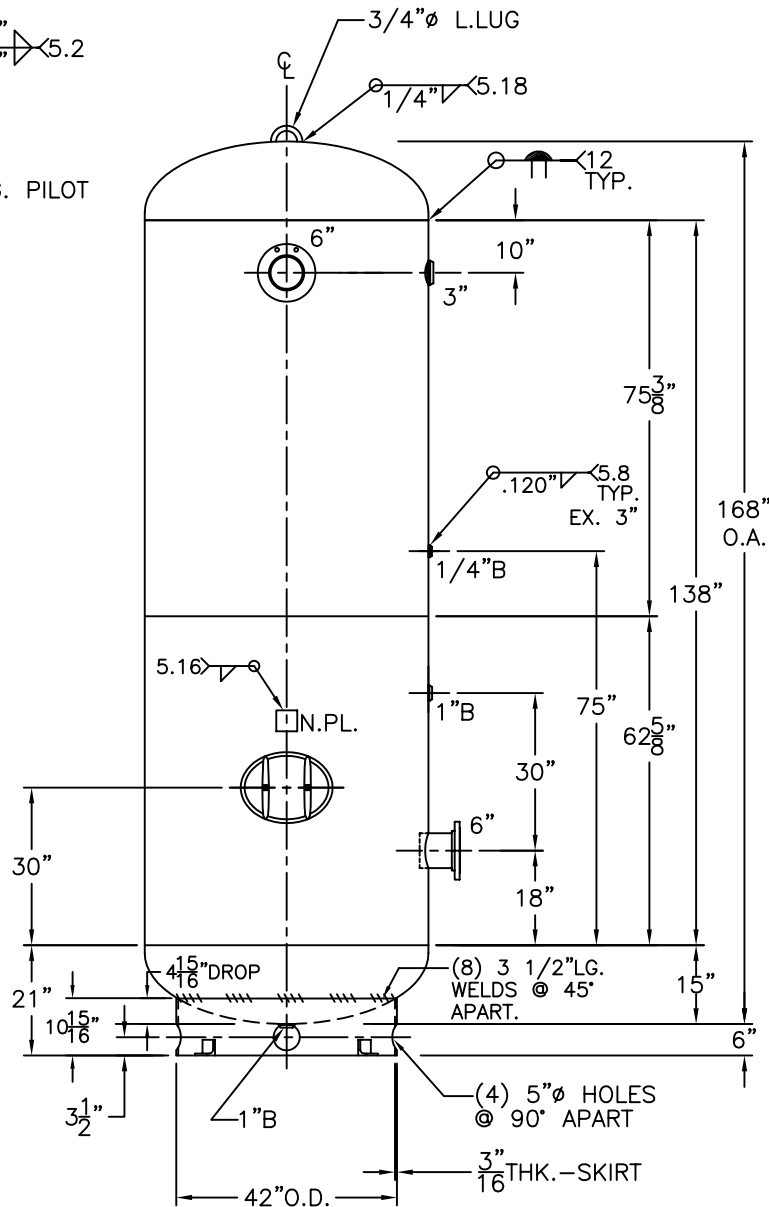


6"-150# R.F.S.O.
FLG. W/SCH 40
PIPE x 7 9/16" LG.
(2) PLC'S



NOTE: 1) HYDRO @ 163 PSIG. MIN.

SHELL / HEADS	
.250" SA-516-70 2:1 S.E.	JOGGLE
.225" SA-455	
M.A.W.P. 125 PSIG. @ 400 °F	
M.D.M.T. -20 °F @ 125 PSIG.	
ASME SECTION VIII DIV. 1, 2001 ADD 2002	
X-RAY: RT-NO	
GALLONS: 1550	WT. 2260 LBS.
SERIAL NO.	
N.B.	
INSIDE: UNPAINTED	
OUTSIDE: PRIME	
CAD "B" SIZE UNDER "STD"-SERIES	
BY: J.G.	SCALE: 1/2" = 12"
ROY E. HANSON JR. MFG.	
1924 COMPTON AVE. LOS ANGELES, CA 90011	
54-VG-1550-R	REV. 12-9-02
FOR: HANSON STANDARD	DATE: 3-17-94
VERT. AIR TANK	