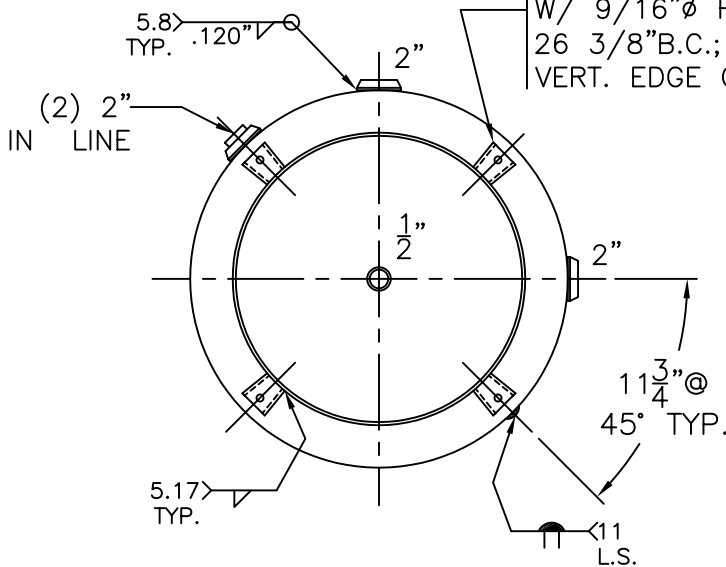


NOTE: 1) HYDRO @ 260 PSIG. MIN.

SHELL / HEADS	
.166" SA-414-G	2:1 S.E.
(.164" MIN.) JOGGLE	
.149" OFFSET	
.165" SA-414-G	
M.A.W.P.	200 PSIG. @ 400 °F
M.D.M.T.	-20 °F @ 200 PSIG.
ASME SECTION VIII	DIV. 1, 2010 ADD 2010
X-RAY:	RT-4 SPOT L.S. ONLY
GALLONS:	240
SERIAL NO.	WT. 436 LBS.
N.B.	

1/4" THK. CLIPS PER MA-395-B (4) PLC'S. W/ 9/16" ø HOLE ON 26 3/8" B.C.; WELD OUTSIDE VERT. EDGE OF CLIP ONLY



30-VA-240-R	REV. 3-22-11
FOR: HANSON STANDARD	DATE: 12-2-86
VERT. AIR TANK	
INSIDE: UNPAINTED	
OUTSIDE: PRIME	
BY: E.S.	SCALE: 3/4" = 12"
ROY F. HANSON JR. MFG.	
1600 E. WASHINGTON BLVD.	
LOS ANGELES, CA 90021	