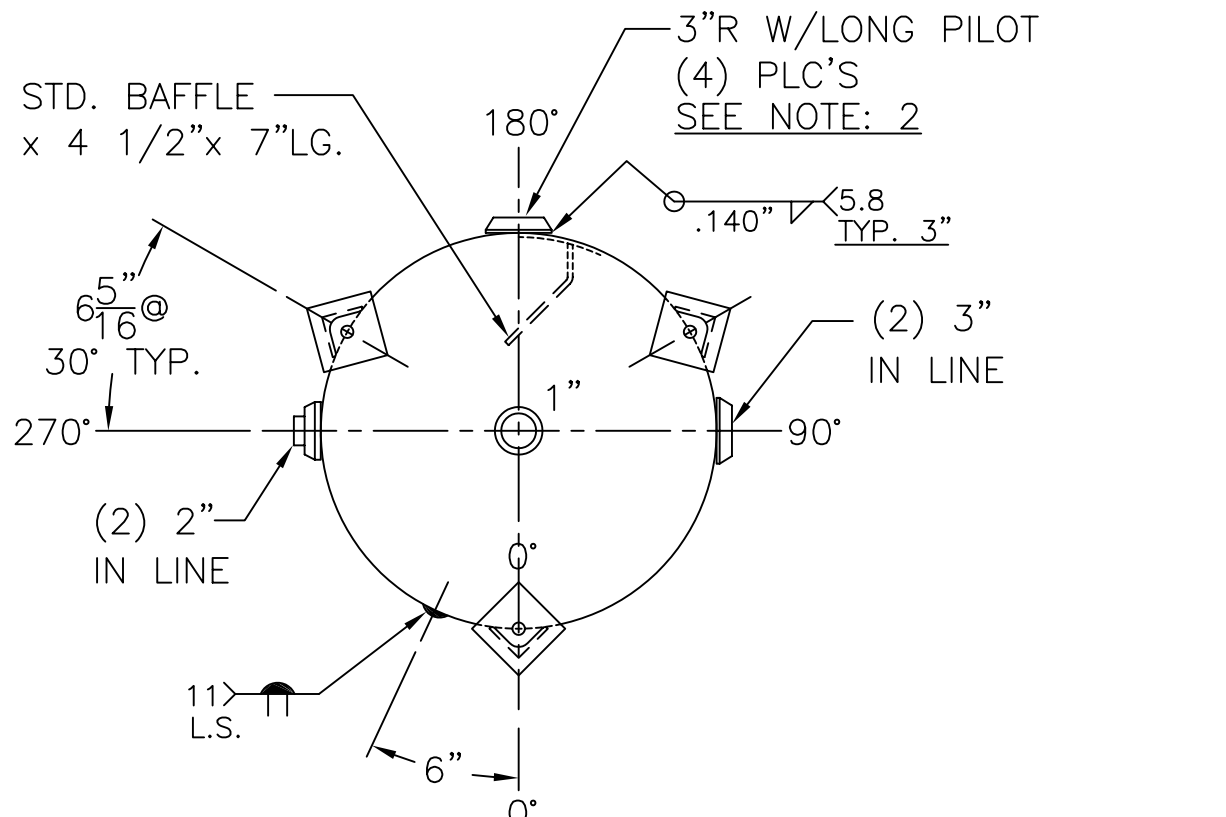


NOTE: 1) HYDRO @ 195 PSIG. MIN.
 2) 3"R W/LONG PILOT - MACHINE TO 4 5/16" O.D.

(3) 2 1/2" x 2 1/2" x 3/16" THK. x 16 1/16" LG. ANGLE LEGS
 (3) 4" x 4" x 1/4" THK. PAD W/ 3/4" Ø HOLE FOR 1/2" Ø x 6" LG. BOLTS GRADE 5 OR BETTER



SHELL / HEADS		M.A.W.P. 150 PSIG. @ 250 °F	
.164" SA-414-G 2:1 S.E.		M.D.M.T. 0 °F @ 150 PSIG.	
JOGGLE - .159 OFFSET		ASME SECTION VIII DIV. 1, 2010 ADD 2010	
.136" SA-414-G		X-RAY: RT-NO	
		GALLONS: 115 WT. 228 LBS.	
		SERIAL NO.	
		N.B.	
FOR: RAYPAK		WK-840-B	
VERT. WATER (BUFFER) TANK		REV. 1-18-11	
INSIDE: UNPAINTED		DATE: 9-27-04	
OUTSIDE: PRIME			
LEG-ZONE 4-15 KM.			
BY: J.G./R.L.		SCALE: 1"=12"	
ROY E. HANSON JR. MFG.			
1600 E. WASHINGTON BLVD.			
LOS ANGELES, CA 90021			