

30" O.D.

5.18 TYP.

0°

3/4"

3/4"  $\phi$  SOLAR LIFT LUG (2) PLC'S.

3/16"  $\phi$  3/16" TYP. PIPES

5.2 TYP.

90°

5.8 TYP.

3/4" B

3/4"

N.S. & F.S.

3/4"  $\phi$  R.B. N.S. & F.S.

4"

4"

15"

3/4" B

225°

135°

2"

RAISED N.PL.

5.17 TYP.

2" R W/ C.I. PLUG INSP. OPENING (2) PLC'S.

4"-150# R.F.S.O. FLG. W/ SCH. 40 SA-106-B PIPE x 7 1/16" LG. (2) PLC'S.

.135" THK. BAFFLE PER: WM-634-B-1A

1/4"  $\phi$  1/4" TYP.

5.12 TYP.

12 TYP.

89" O.A.

68 1/8"

3/4"  $\phi$  R.B. N.S. & F.S.

4"

4"

10 7/16"

(4) 3 1/2" LG. WELDS @ 90° APART

6"

16 7/16"

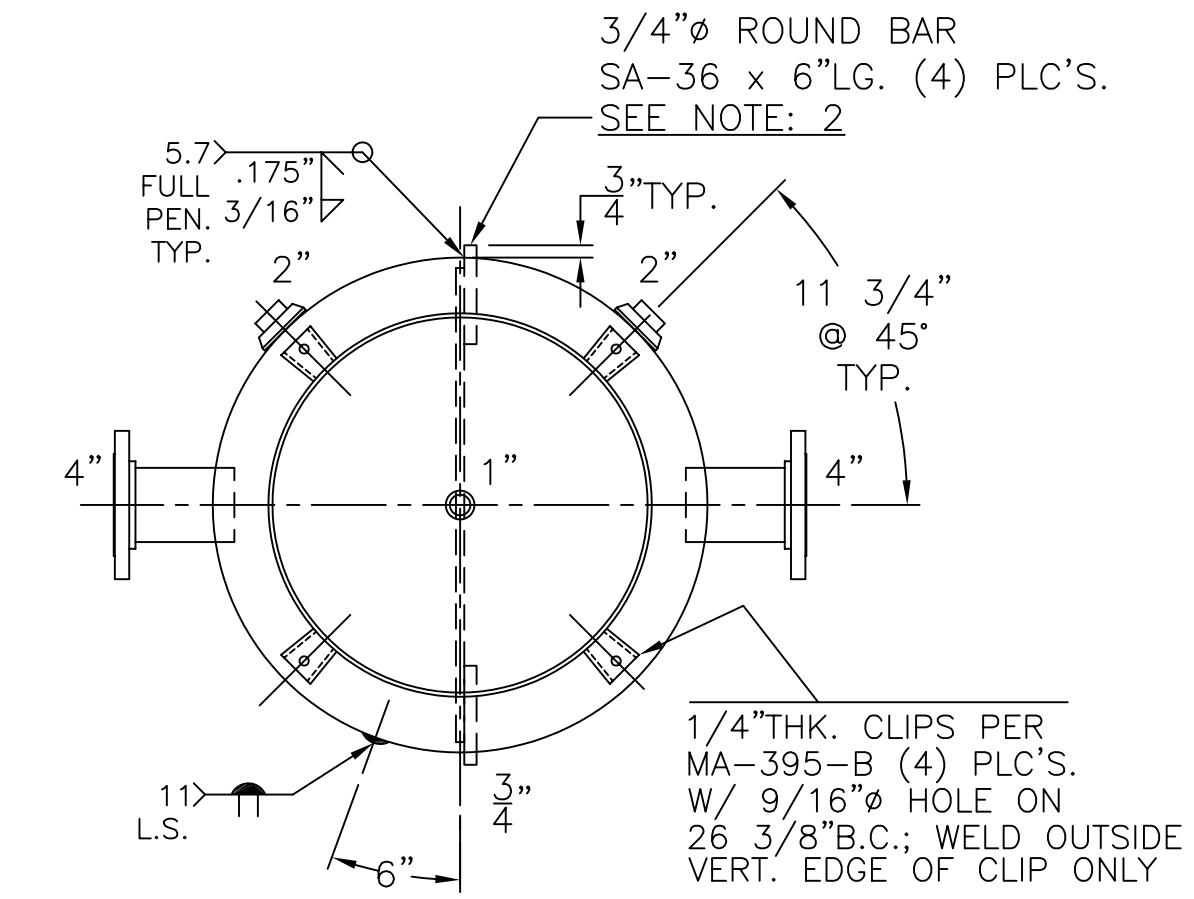
8 15/16"

3"

1" B

(4) 4" DIA. HOLES @ 90° APART

23 1/4"  $\phi$



3/4"  $\phi$  ROUND BAR SA-36 x 6" LG. (4) PLC'S. SEE NOTE: 2

1/4" THK. CLIPS PER MA-395-B (4) PLC'S. W/ 9/16"  $\phi$  HOLE ON 26 3/8" B.C.; WELD OUTSIDE VERT. EDGE OF CLIP ONLY

NOTE: 1) WELD 3/4"  $\phi$  ROUND BARS TO SHELL AFTER HEADS ARE IN PLACE. 2) HYDRO @ 195 PSIG. MIN.

SHELL / HEADS	
JOGGLE	.166" SA-414-F 2:1 S.E.
	.175" SA-414-G
M.A.W.P.	150 PSIG. @ 200 °F
M.D.M.T.	0 °F @ 150 PSIG.
ASME. SECTION VIII	DIV. 1, 2007 ADD 2008
X-RAY:	RT-NO
GALLONS:	250 WT. 563 LBS.
SERIAL NO.	
N.B.	
FOR:	VERT. CHILLED WATER TANK
	SURFACE AREA = 62.0 SQ. FT.
	UW-21(b)
	INSIDE: UNPAINTED
	OUTSIDE: PRIME
BY: E.S. / C.J.	SCALE: 1"=12"
<b>ROY E. HANSON JR. MFG.</b>	
	1600 E. WASHINGTON BLVD.
	LOS ANGELES, CA 90021
WM-634-B	REV. 7-20-09
	DATE: 3-16-09