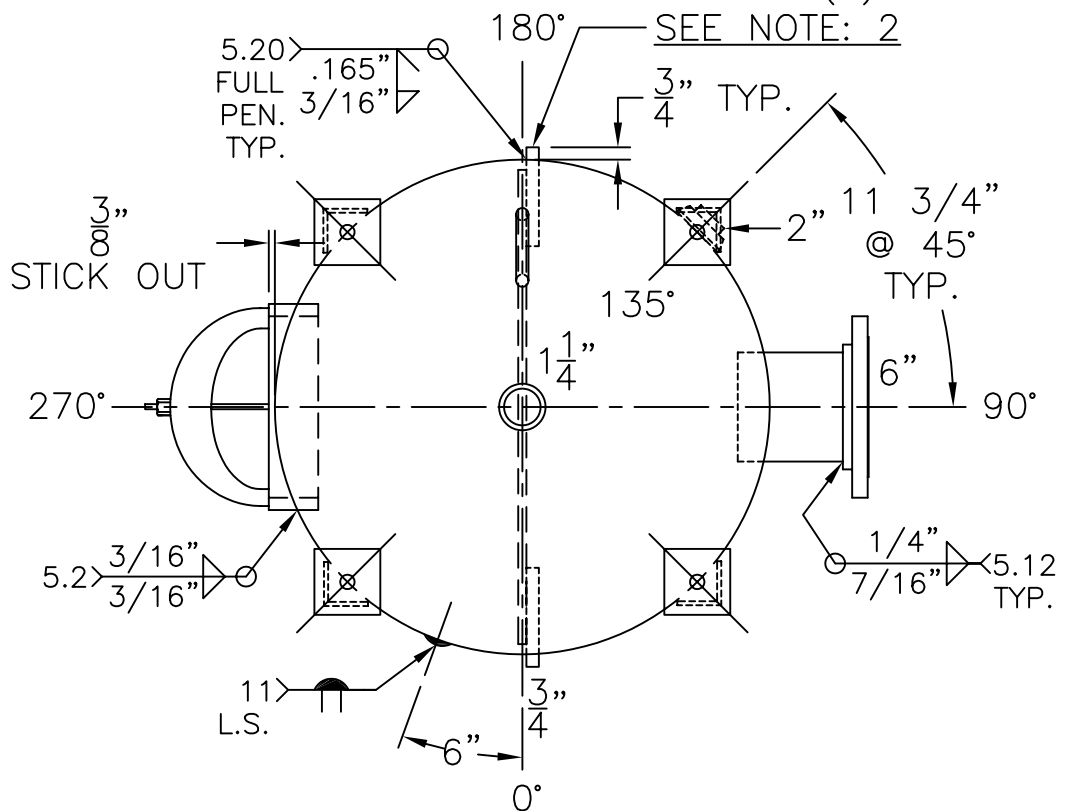


(4) 2 1/2" x 2 1/2" x 3/16" THK. x 22 1/16" LG. ANGLE LEGS

(4) 4" x 4" x 1/4" THK. PAD W/ 7/8" Ø HOLE FOR 5/8" Ø x 8" LG. BOLTS GRADE 5 OR BETTER 6" EMBEDMENT

3/4" Ø ROUND BAR SA-36 x 6" LG. (4) PLC'S. SEE NOTE: 2



NOTE: 1) 2) WELD 3/4" Ø ROUND BARS TO SHELL AFTER HEADS ARE IN PLACE. HYDRO @ 195 PSIG. MIN.

SHELL / HEADS		M.A.W.P. 150 PSIG. @ 200 °F	
.166" SA-414-F 2:1 S.E. JOGGLE		M.D.M.T. 0 °F @ 150 PSIG.	
.165" SA-414-G		ASME SECTION VIII DIV. 1, 2010 ADD 2010	
X-RAY: RT-NO		GALLONS: 200 WT. 620 LBS.	
SERIAL NO.		N.B.	
FOR: -		WN-350-B	
VERT. CHILLED WATER TANK		REV. DATE: 9-28-11	
SURFACE AREA = 50.7 SQ. FT.			
UW-21(b)			
INSIDE: UNPAINTED			
OUTSIDE: PRIME			
LEG-ZONE 3-15 KM.			
BY: E.S. / C.J. SCALE: 1"=12"			
ROY E. HANSON JR. MFG.			
1600 E. WASHINGTON BLVD.			
LOS ANGELES, CA 90021			