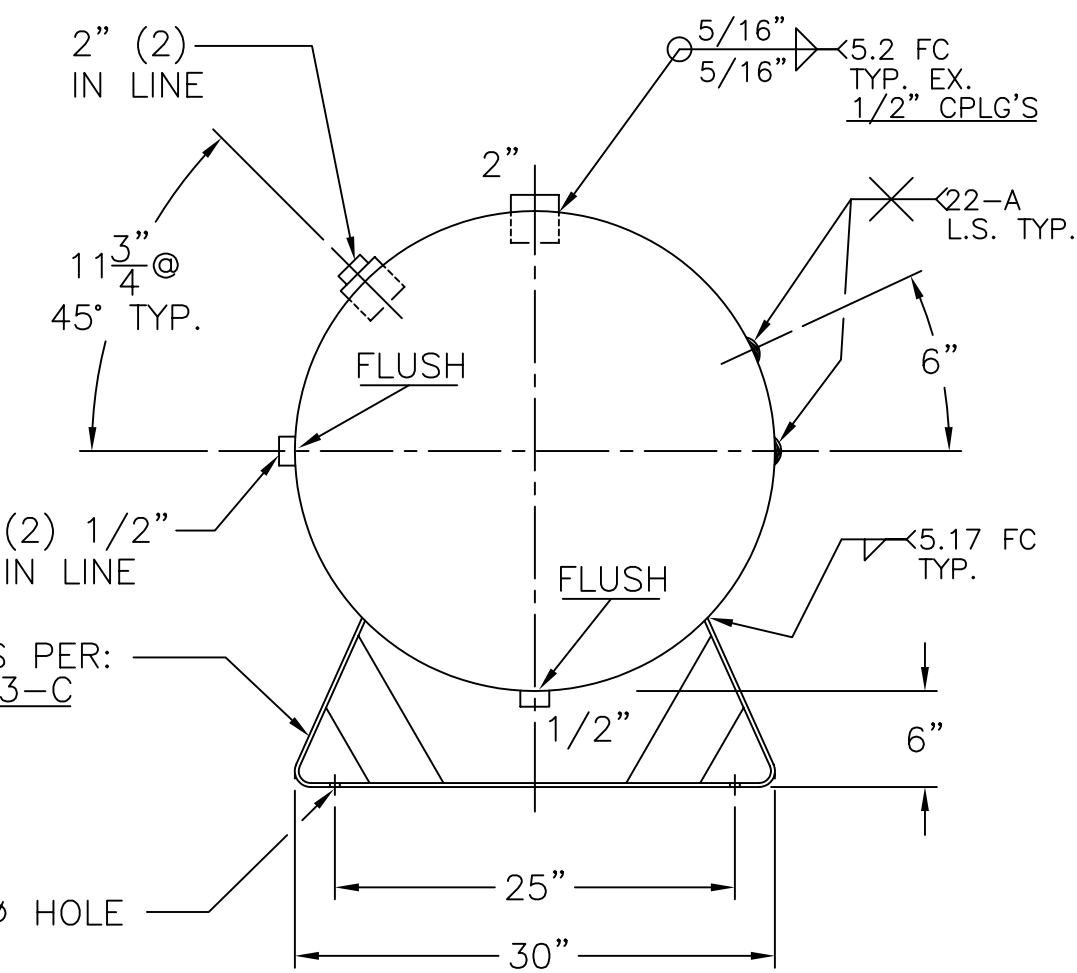


7/8" STICK OUT
ON ALL
2" CPLG'S

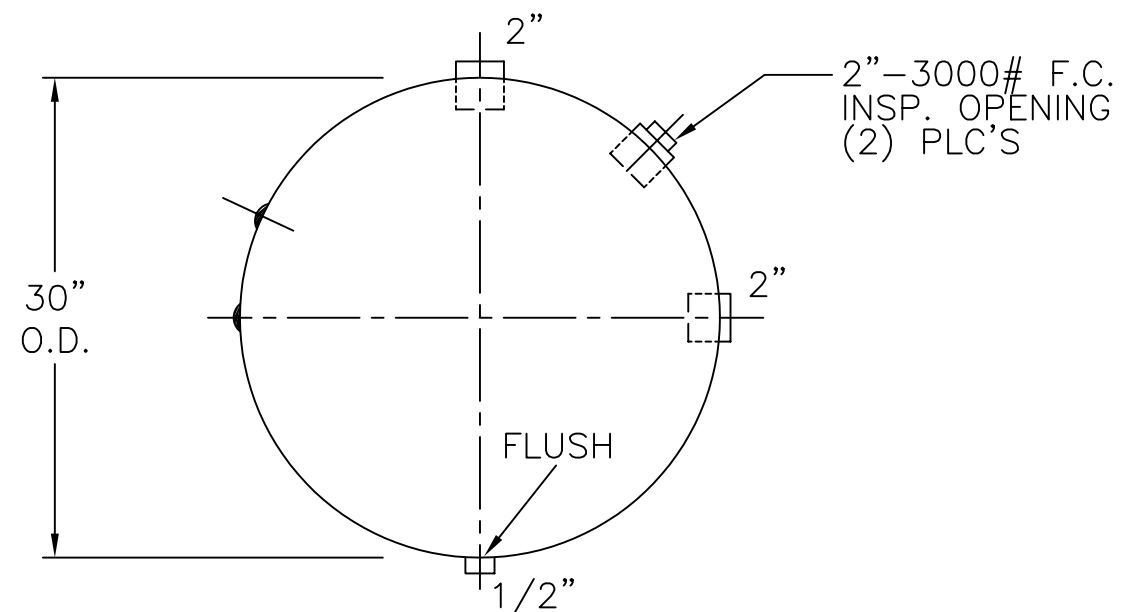


SUPPORTS PER:
MA-102-3-C

(2) 5/8" Ø HOLE

- 3) PRE HEAT BEFORE WELDING TO 150°F
- 2) ALL CPLG'S ARE 3000# FULL CPLG.

NOTE: 1) HYDRO @ 1432 PSIG. MIN.



VIEW W/OUT SUPT'S

SHELL / HEADS	.875" SA-516-70 2:1 S.E. (.858" MIN.)	30-HY-240-W	REV. 6-27-08
			DATE: 9-2-80
		FOR: HANSON STANDARD	
		HORIZ. AIR TANK	
	875" SA-516-70	SURFACE AREA = 59.5 QS. FT.	
		INSIDE: UNPAINTED	
	M.A.W.P. 1100 PSIG. @ 400 °F	OUTSIDE: PRIME	
	M.D.M.T. -20 °F @ 1100 PSIG.	CAD-"B" SIZE UNDER "STD"-SERIES	
	ASME SECTION VIII DIV. 1, 2007 ADD 2007	BY: J.G. SCALE: 1"=12"	
	X-RAY: RT-2 100% L.S. & SPOT ALL G.S.	ROY E. HANSON JR. MFG.	
	GALLONS: 213 WT. 2322 LBS.		
	SERIAL NO.	1600 E. WASHINGTON BLVD. LOS ANGELES, CA 90021	