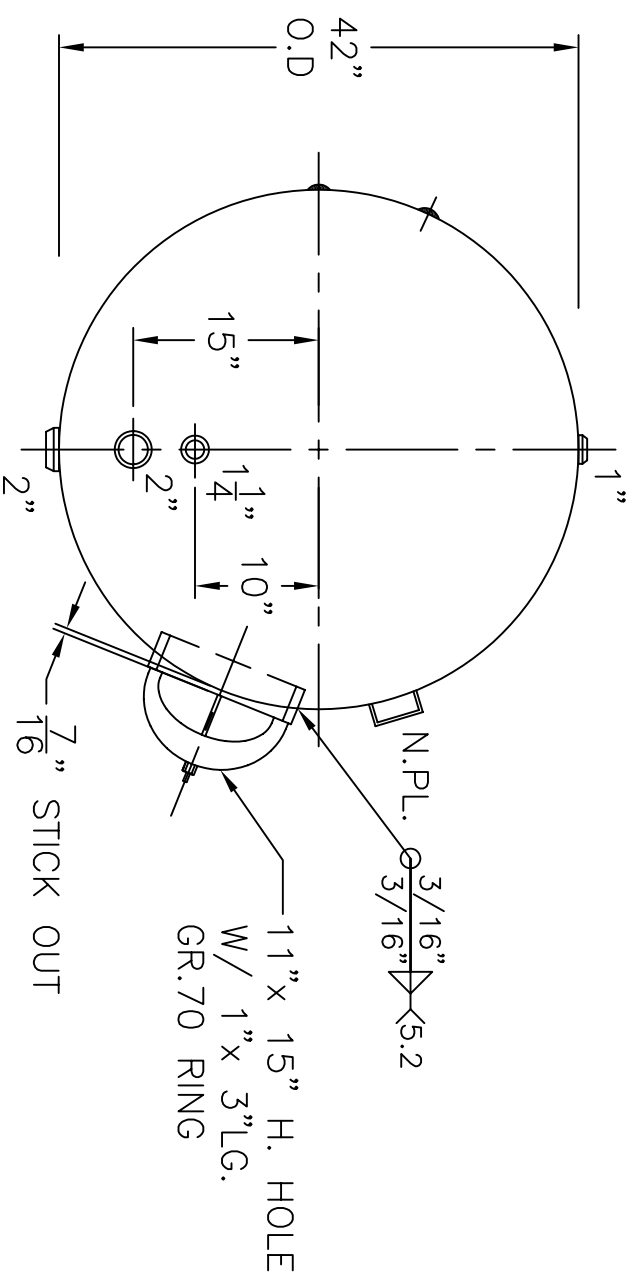
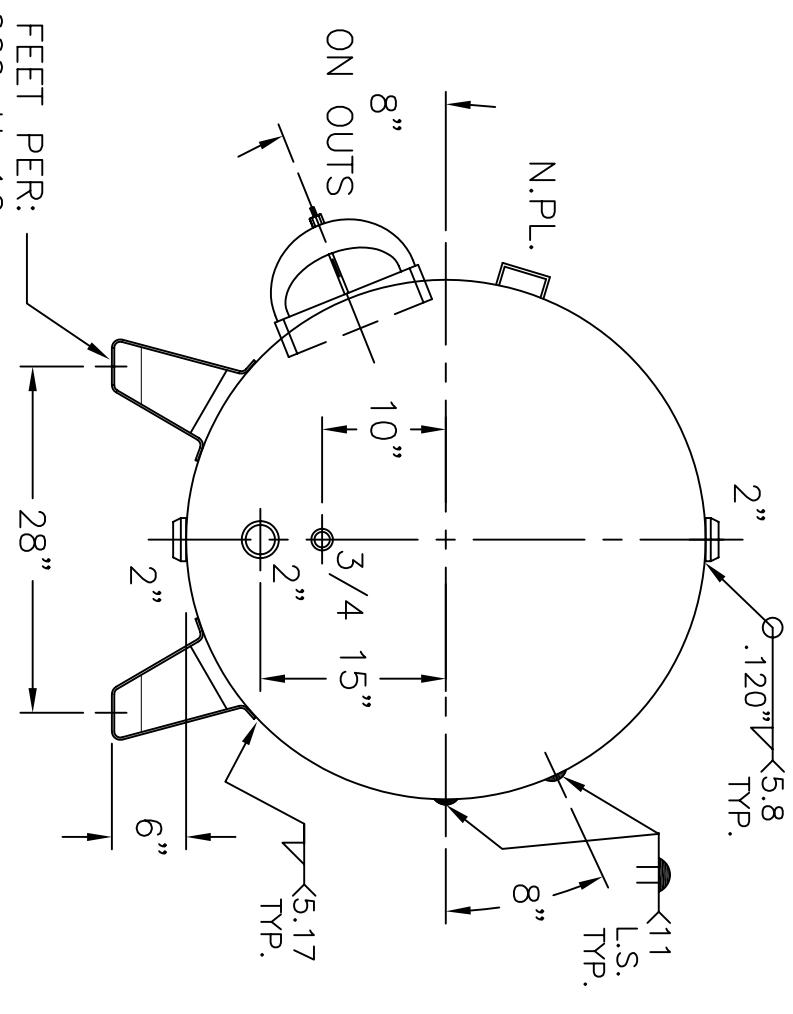


SOLAR FEET PER:
S-42-660-H-1C



VIEW W/O SUPPORTS

NOTE: 1) HYDRO @ 240 PSIG.
2) 3-19-09 PROOF TEST.

| | | | |
|---------------------------------|-----------------|---------------|----------|
| HEADS | .205" SA-455 | 2:1 | S.E. |
| SHIELD | .175" SA-414-G | | |
| M.A.W.P. | 160 | PSIG. | @ 180 °F |
| ASME SECTION | IV | 2010 | ADD 2010 |
| X-RAY: | RT-NO | / | H.L.W. |
| GALLONS: | 600 | WT. | 983 LBS. |
| SERIAL NO. | | | |
| N.B. | | | |
| ES-42-600-H | REV. 6-13-11 | DATE: 10-2-89 | |
| FOR: HANSON STANDARD | | | |
| HORIZ. HOT WATER TANK | | | |
| SURFACE AREA = 105.4 SQ. FT. | | | |
| INSIDE: EPOXY LINED | | | |
| OUTSIDE: PRIME | | | |
| CAD "B" SIZE UNDER "STD"-SERIES | | | |
| BY: E.S. | SCALE: 3/4"=12" | | |
| ROY E. HANSON JR. MFG. | | | |
| 1600 E. WASHINGTON BLVD. | | | |
| LOS ANGELES, CA 90021 | | | |