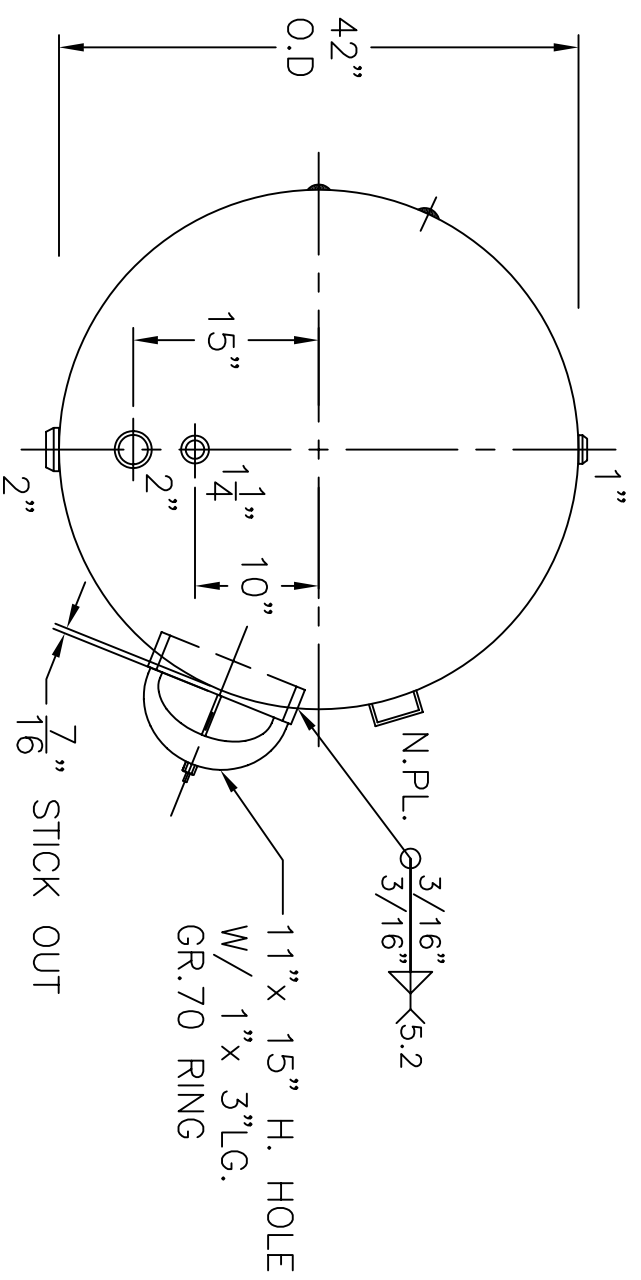
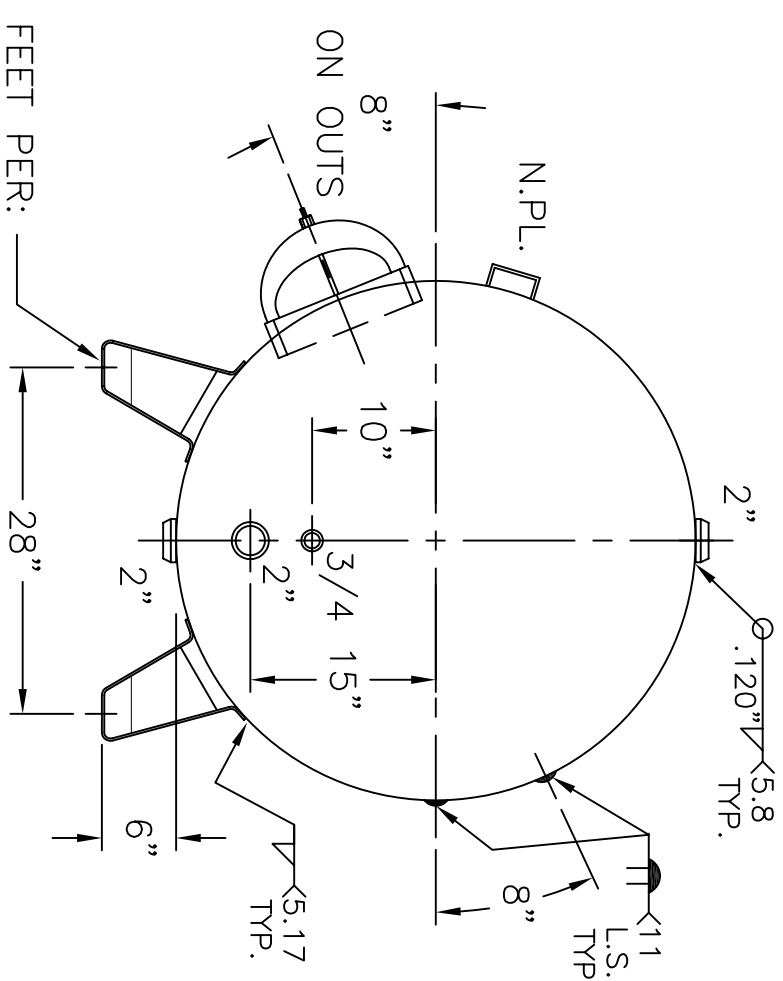


SOLAR FEET PER:
S-42-660-H-1C



VIEW W/O SUPPORTS

NOTE: 1) 2) 3-19-09 PROOF TEST.
HYDRO @ 240 PSIG.

HEADS	.205" SA-455	2:1	S.E.
SHIELD	JOGGLE		
	.175" SA-414-G		
M.A.W.P.	160	PSIG.	@ 180 °F
ASME SECTION	IV	2010	ADD 2010
X-RAY:	RT-NO	/	H.L.W.
GALLONS:	660	WT.	1063 LBS.
SERIAL NO.			
N.B.			
ES-42-660-H	REV. 6-14-11	DATE: 10-2-89	
FOR: HANSON STANDARD			
HORIZ. HOT WATER TANK			
SURFACE AREA = 115.8 SQ. FT.			
INSIDE: EPOXY LINED			
OUTSIDE: PRIME			
CAD "B" SIZE UNDER "STD"-SERIES			
BY: E.S.	SCALE: 3/4"=12"		
ROY E. HANSON JR. MFG.			
1600 E. WASHINGTON BLVD.			
LOS ANGELES, CA 90021			