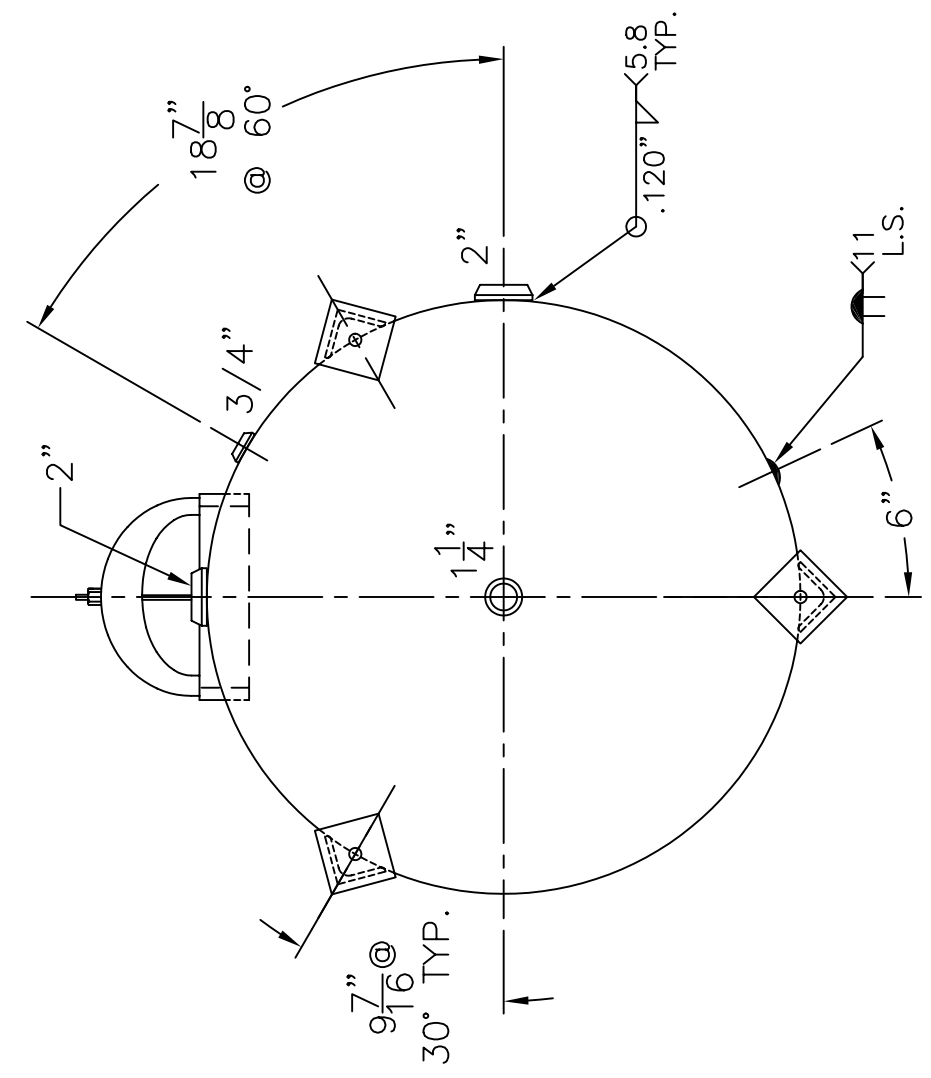


2) 4-1-04 PROOF TEST.  
 NOTE: 1) HYDRO @ 240 PSIG.

SHELL / HEADS	.182" SA-455 2:1 S.E.
	JOGGLE - .149 OFFSET
SHELL / HEADS	.165" SA-414-G
	M.A.W.P. 160 PSIG. @ 180 °F
ASME. SECTION IV 2004 ADD 2006	
X-RAY: RT-NO / H.L.W.	
GALLONS:	305
WT.	541 LBS.
SERIAL NO.	
N.B.	

(3) 3" x 3" x 1/4" THK.  
 x 21 11/16" LG. ANGLE LEGS  
 (3) 4" x 4" x 5/16" THK.  
 PAD W/ 3/4"  $\phi$  HOLE  
 FOR 1/2"  $\phi$  x 6" LG BOLTS  
 GRADE 5 OR BETTER



ES-36-305-V	REV. 1-11-07
	DATE: 8-31-89
FOR: HANSON STANDARD VERT. HOT WATER TANK	
SURFACE AREA = 65.2 SQ. FT.	
INSIDE: EPOXY LINED	
OUTSIDE: PRIME	
CAD-"B" UNDER "STD"-SERIES	
LEG-ZONE 4-15 KM. DATE: 2-4-03	
BY: J.G.	SCALE: 1"=12"
<b>ROY E. HANSON JR. MFG.</b>	
1600 E. WASHINGTON BLVD. LOS ANGELES, CA 90021	